



The Hundred Parishes

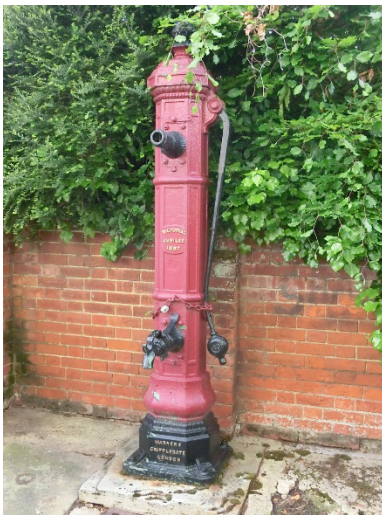
An introductory article about WATER PUMPS

Today there is much we take for granted that our ancestors would not have done – for example the availability of fresh running water. In 1786 it was recorded that during an attempt to reposition a Dunmow water pump “the gentlemen of the Mob Classes were determined it should not be moved . . . a great mob got together and a great riot ensued.” The riot led to 12 people being imprisoned in Chelmsford Gaol.

Throughout the Hundred Parishes there are numerous surviving examples of water pumps that once served a small local community. Many are listed. Many are lovingly cared-for, albeit the many coats of paint sometimes make it difficult to read any inscription.

The parish of Chrishall has at least three pumps of the same design, each manufactured by G.INGOLD, ENGINEER, BP STORTFORD. One, painted green, is shown on the right.

Colours sometimes change. The two photos below are of the same pump in Little Dunmow; they were taken a few years apart: red was in fashion in 2013, but by 2016 the choice was green.



The Little Dunmow pump was manufactured by Warners of Cripplegate, London and installed to commemorate Queen Victoria’s golden jubilee in 1887.

Ten years later, the “pumphouse” shown on the right was erected over the somewhat older pump beside Buntingford’s market place “to commemorate the 60th year of the glorious reign of Queen Victoria”.



Westmill has a similar pumphouse and a similarly boxed pump, dating from about 1900. It stands on the village green and is shown on the right. The pump's housing carries the inscription "Traverse the desert and then you can tell what treasure exists in the cool deep well." This is an extract from a poem, *Water*, by Eliza Cook.

A number of pumps have been boxed in, but the cast iron pump may outlast the wooden protection. The image below was taken from an old postcard of Littlebury.



Today, the pump still stands, now in a flower bed, beside the B1383, but its wooden casing has not survived.



The pumps below stand in Linton, on the left, and Hatfield Broad Oak, on the right.



The Linton pump was made by Ingold and carries a warning from Linton Rural District Council that any person found damaging it will be prosecuted. A close-up of Hatfield Broad Oak's pump reveals an attachment which allows a bucket to be suspended beneath the spout.

Pictured below are three robust 19th-century pumps of a similar octagonal style. They each stand in central locations in, from the left, Hunsdon, Thaxted and Great Dunmow



The three devices below have quite a different appearance, and a different way of raising water from below. It may be more appropriate to call them wellheads rather than pumps. They are situated, from the left, in High Easter, Clavering and Anstey.



Our final example, in more traditional style and painted white, may be found in Little Hadham.



This article, last updated 28 October 2023, was downloaded from www.hundredparishes.org.uk. Copyright rests with The Hundred Parishes Society. The article may be copied and passed on freely but may not be reproduced for commercial purposes.

Any comments or suggestions for improvement may be submitted by using the Feedback form on the website. The website has many short articles on various aspects of The Hundred Parishes, as well as introductions to individual parishes and to a number of local celebrities, and an extensive What's On section. More than a hundred walk route descriptions can be freely downloaded, with each of the hundred parishes featuring in at least one walk.